

# SHHS

# Emergency Preparedness Information



To prepare students for  
responding  
to an emergency situation.



# Fire Evacuation

*For use when conditions outside are safer than inside.*

When the announcement is made or alarm sounded:

- Listen for instructions.
- Provide immediate First Aid if needed—Check on your classmates and report injuries to the teacher.
- When directed, evacuate to the **Emergency Assembly Area (EAA)** by the route designated for your classroom.
- Teacher will secure the **GREEN (All Clear Sign)** OR **RED (Need Assistance Sign)** onto the classroom or office door.
- At the EAA, look for your Period 2 teacher's name so they can take roll!
- Stay with your Period 2 teacher and classmates.
- Wait for further instructions
- **IF YOUR PARENT ARRIVES TO PICK YOU UP – LET YOUR TEACHER OR A STAFF MEMBER KNOW!**



# Lockdown



*For use to protect building occupants from potential dangers on or near campus*

When the announcement is made:

- Clear the halls and report to the nearest classroom.
- **Help close and lock all doors and windows.**
- **Do not leave or open/unlock doors/windows for any reason.**
- **Stay away from all doors and windows. Move to the interior walls and remain out of sight. Try to hide.**
- **Lights will be turned off. Be quiet!**
- Teacher will take attendance—if you are in a random classroom, quietly provide the teacher with your name and ID#.
- **IF you find yourself locked out – **Hide, Run, or Fight the threat.****
- Wait for the “All Clear” signal or further instructions.

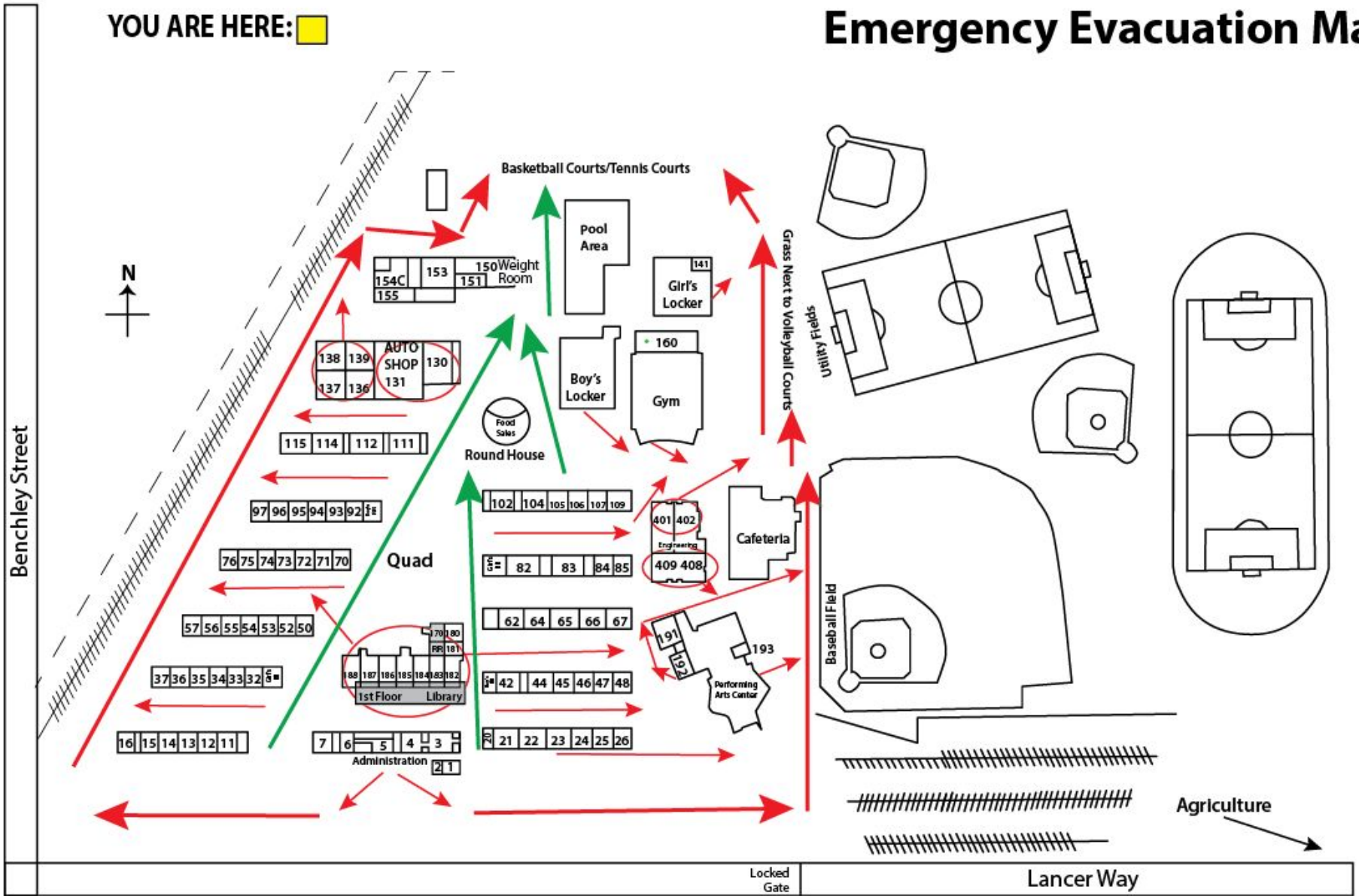
# Earthquake (Drop, Cover, Hold)

*For use in earthquake or other imminent danger to buildings or immediate surroundings.*

- **DROP** to the floor, take cover under a desk or table, and face away from the windows
- **COVER** your eyes with your arms
- **HOLD** onto the table or desk legs, and maintain present location/position
- Wait for further instructions
- Check on your classmates and report injuries—be aware of your surroundings
- Teacher will secure the **GREEN (All Clear Sign)** OR **RED (Need Assistance Sign)** onto the classroom or office door.
- When directed, evacuate to the **Emergency Assembly Area (EAA)** by the route designated for your classroom.
- At the EAA, look for your Period 2 teacher's name so they can take roll!
- Stay with your Period 2 teacher and classmates.
- **IF YOUR PARENT ARRIVES TO PICK YOU UP – LET YOUR TEACHER OR A STAFF MEMBER KNOW!**

YOU ARE HERE:

# Emergency Evacuation Map



## Sunny Hills High School

Primary Evacuation Route →  
Alternative Evacuation Route →

# Emergency Assembly Area 2022-2023

| Emergency Assembly Area 2022-2023   |                      |                           |                           |                  |   |            |          |   |                            |   |  |
|---|----------------------|---------------------------|---------------------------|------------------|---|------------|----------|---|----------------------------|---|--|
| 1   | 2                    | 3                         | 4                         | 5                | 6   | 7          | 8        | 9                                       | 10                         |   |  |
| Peoples   | Colomac              |                           | Morris, A.                | Morales          | Tricoche                                      | Zubko      | Kim, K.  | <u>Dorrego</u><br>France                | Wooldridge                 |   |  |
| Li  | Morris, M.           | Vu                        | Rosenkranz                | Ruiz             | Llamas  | Papageorge | Kim, D.  | <u>Ma</u><br><u>Munsell</u><br>Espinoza | Peterson                   | < | Tennis Courts                          |
| Lemus   | Gartner              | Johnson                   | Shia                      | Acosta           | Griswold                                      | Bailey     | Knutson  | Flores                                  | Valenzuela                 |   |  |
| *Volen  | *Tan, S              | *Tan, M                   | *Bradburn                 | *Torres          | *Fenstermaker                                 | *Bueno     | *Morita  | *McGuire                                | *Bevill                    |   |  |
| GROUP F   |                      | GROUP G                   |                           | GROUP H          |   | GROUP I    |          | GROUP J                                 |                            |   |  |
| First Class to arrive opens the double gate   |                      |                           |                           |                  |   |            |          |   |                            |   |  |
| 1   | 2                    | 3                         | 4                         | 5                | 6   | 7          | 8        | 9                                       | 10                         |   |  |
| *Enrico   | *Kwon                | *Oudega                   | *Gordon, S.               | *Del<br>Crognale | *Safe   | *Cheng     | *Deister | *Mathen                                 | *Thompson                  |   |  |
| Lee   | Wellmeyer-<br>Garcia | <u>Brown</u><br>Boxdorfer | <u>Wolf</u><br>Gordon, J. | Admin<br>Office  | Teachers or<br>Staff w/conf or<br>No Students | Linares    | Ghareebo | Penuelas                                | Ng                         | < | Basketball<br>Courts                   |
| Broady  | Munoz                | Abbott                    | POOL                      |                  |   | Wilde      | Collodel | <u>Fairall</u><br>Kuhn                  | <u>Deutsch</u><br>Artemyev |   |  |
| Agriculture/<br>Lyceum<br>Students  | Weigman              | Byun                      |                           |                  |   | Rodriguez  | Ok       | Joyce                                   | Vogt                       |   | Ag Evacuate to<br>N. end of Ag<br>Farm |
| GROUP A   |                      | GROUP B                   |                           | GROUP C          |   | GROUP D    |          | GROUP E                                 |                            |   |  |
| <p style="color: red;"><b>Teachers:</b> Take roll and then send a responsible student with your completed Attendance Roster to your group leader as quickly as possible.</p> <p style="color: red; text-align: center;"><b>*Group Leaders return the completed forms to the Admin Area.</b></p> |                      |                           |                           |                  |   |            |          |   |                            |   |  |

# Reminder for Students During the Drill:

- In the event of an actual emergency evacuation, always report to your 2<sup>nd</sup> period teacher at the EAA – even if it occurs at a time when you are not in class (e.g. passing period, break, lunch).
- Remain with your 2nd period teacher until the drill is over. Do not wander around.