



# Math Course Sequences

## Sunny Hills High School



	8 <sup>TH</sup> GRADE	9	10	11	12
<b>GENERAL</b>	Math 8	*Algebra Foundations <b>Year 1</b>	Algebra 1 or Algebra Foundations <b>Year 2</b>	Geometry or Business Finance	Algebra II or Business Finance
<b>COLLEGE PREP</b>	Math 8	*Algebra I	Geometry	Algebra II	Pre-Calculus
<b>COLLEGE PREP / AP</b>	Math 8	*Algebra I	Geometry	Algebra II	Prob Stat AP Stats (Recommend B or better in Algebra 2)
<b>HONORS / AP / IB</b>	Math 8	*Algebra I	Honors Algebra II	Honors Pre-Calculus	IB (Anlys&App) AP Statistics AP Calculus AB AP Calculus BC

*Geometry Summer School*

<b>COLLEGE PREP / AP</b>	Algebra 1	*Geometry	Algebra II	Pre-Calculus	Math Analysis Prob Stat AP Statistics AP Calculus AB
<b>HONORS / AP</b>	Algebra 1	*Honors Geometry	Honors Algebra II	Honors Pre-Calculus	AP Statistics AP Calculus AB AP Calculus BC
<b>INTERNATIONAL BACCALAUREATE (IB)</b>	Algebra 1	*Honors Geometry	Honors Algebra II	Honors Pre-Calculus	IB (Anlys&App)
<b>HONORS / AP</b>	Geometry	*Honors Algebra II	Honors Pre-Calculus	AP Calculus AB AP Calculus BC	AP Calculus BC AP Statistics
<b>INTERNATIONAL BACCALAUREATE (IB)</b>	Geometry	*Honors Algebra II	Honors Pre-Calculus	IB (Anlys&App)	AP Statistics AP Calculus AB AP Calculus BC

\* By placement score & 8<sup>th</sup> grade class and grade.

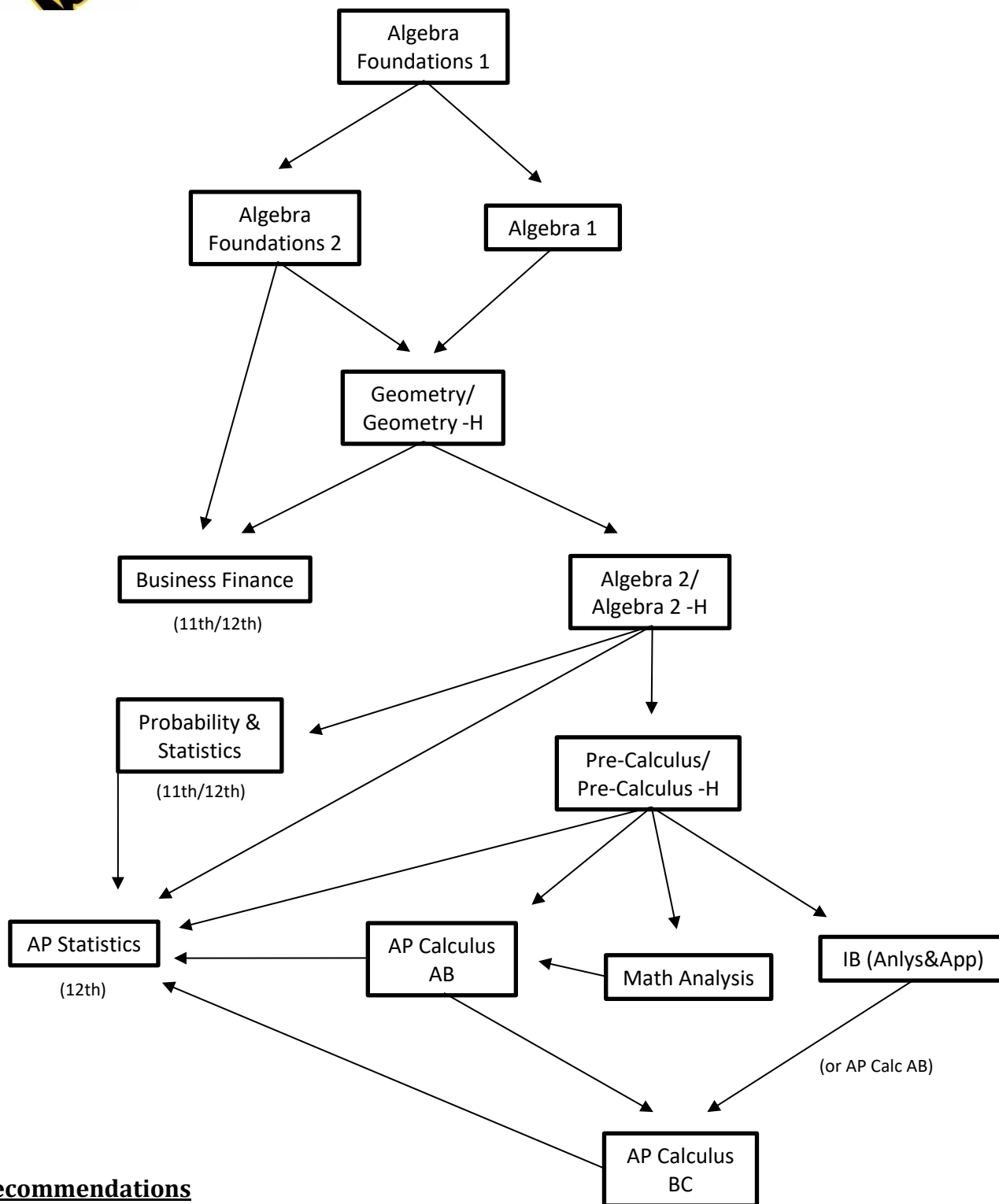
\*\* Geometry summer school is only recommended for Algebra 1 students who earned A's both semesters and are very motivated to do well in Honors Algebra 2 - it's a BIG jump!

- To be successful in the next honors course, it is recommended that a student earn an A or B in his/her previous honors course.
- In Honors/IB classes, a D at the semester may result in a transfer to college prep courses.
- An F at the semester in any math class may result in being dropped from the class.
- Midyear transfers will be evaluated individually.



# Math Course Sequence

## Sunny Hills High School



### Honors Recommendations

- from College Prep: strong A's both semesters
- from Honors: A's & B's

### Summer School (Geometry)

- strong A's both semesters & student/parent waiver